



# Take 60: OPEN 2025 Kickoff

February 12, 2025





# Introductions

*In the chat: Name, Org, State, What brings you joy through difficult moments?*

# Agenda

---

- Welcome
- About OPEN + connection to CareQuest Institute
- OPEN committee updates
- Preview of 2025 plans
- Breakouts to connect with new + existing members
- Q&A
- Wrap up

## Housekeeping:

- Today's meeting is being recorded
- All lines muted upon entry
- Please add questions to Q&A box
- Share comments to chat box
- Recording & slides provided post-event
- If comfortable, please add your pronouns to your Zoom name

# OPEN Group Norms

---

## Participants commit to:

- advancing inclusion, diversity, and involvement
- valuing alternative points of view while keeping the conversation respectful
- assuming knowledge, expertise, and best intent from everyone in the room

*CareQuest Institute respects the rights, differences, and dignity of others. Those taking part in any CareQuest Institute learning activities are expected to demonstrate honesty, integrity, and civility, and are accountable for their conduct.*

*CareQuest Institute reserves the right to remove — and to exclude from participation in CareQuest Institute programs — any person whose inappropriate behavior adversely affects the safety, well-being, and inclusion of community members.*



---

# WELCOME!

*Trenae Simpson, MBA*

*Sr. Directory, Philanthropy, CareQuest Institute for Oral Health*

A photograph of Bell Hooks speaking into a microphone. She is wearing glasses and a red top. The background is dark and out of focus.

One of the most vital ways we **sustain ourselves**  
**is by building communities** of resistance,  
places where we know **we are not alone.**

— *Bell Hooks* —

# What is OPEN?

## ***Oral Health Progress & Equity Network***

*OPEN, an initiative of CareQuest Institute for Oral Health, is a diverse network of individuals and entities who are taking on America's oral health challenges so that everyone has a chance to thrive. OPEN members use their unique experiences, knowledge, and skills to lead network activities every year, creating collective energy that is driving large-scale change.*

# OPEN Commitment to Justice, Equity, Diversity, and Inclusion

---

We are committed to building an environment that values everyone equally while addressing inequalities, including historical and contemporary injustices. We view optimal oral health and access to effective and affordable oral health care as a right rather than a privilege.

We are committed to **Justice, Equity, Diversity, and Inclusion (JEDI)** that includes a commitment to systemic change and the assurance of the structural and personal conditions needed to support equity and inclusion for all people.

We believe that a commitment to JEDI must be action-oriented. It includes applying a health equity and social justice lens to our oral health work and our personal thinking and practice. It requires building an ongoing practice of critical reflection within our organization and the broader systems perpetuating inequities. No one of us as individuals and no one institution will be perfect. Still, at OPEN, we are committed to the practice of JEDI and helping each other be accountable to practices that foster an inclusive environment. Otherwise, we are in danger of reinforcing health inequities, often unintentionally.

We believe that JEDI is a process that requires continual reflection and commitment that is best understood through aligned action at the micro and macro levels.



# Networks and systems change

Systems-level problems require systems-level solutions

**Look upstream at the root causes.**



Responsible Management of Finite Resources

**Charity is not a system of care.**



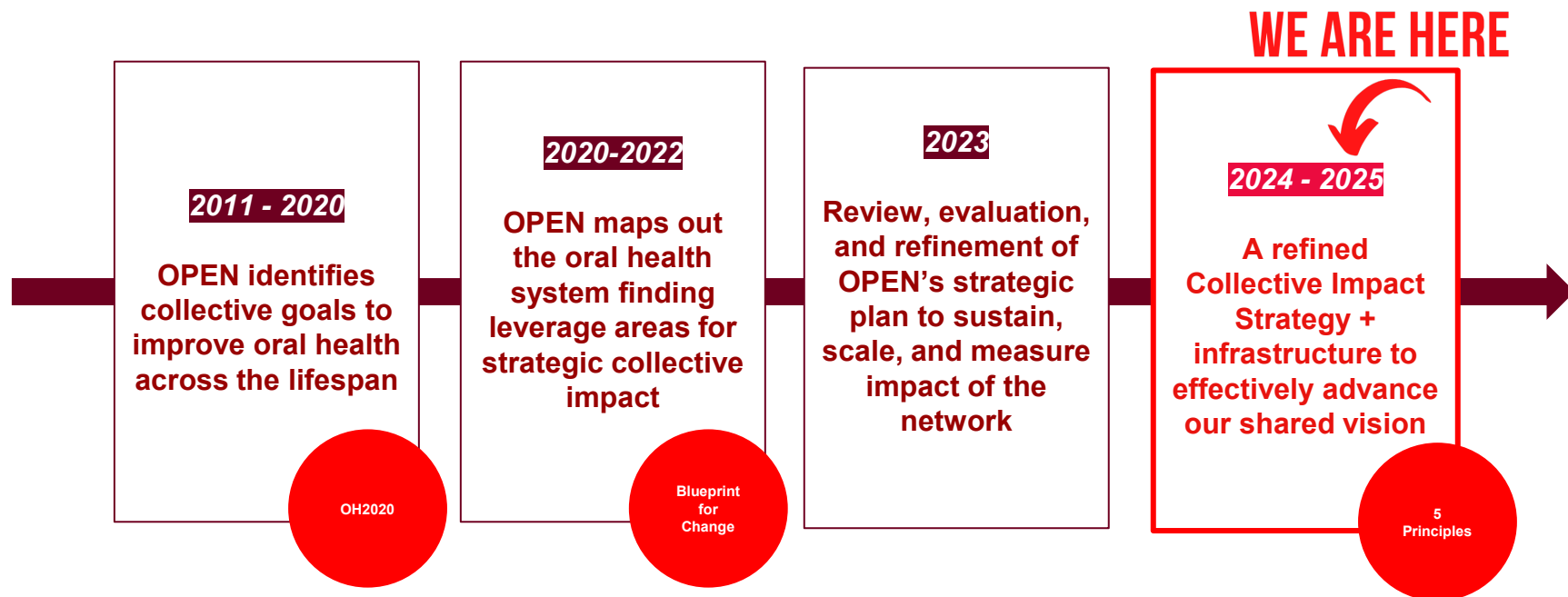
Oral health equity cannot be attained in silos.

**Systems change requires a network of change agents working collectively.**

# OPEN in Action!

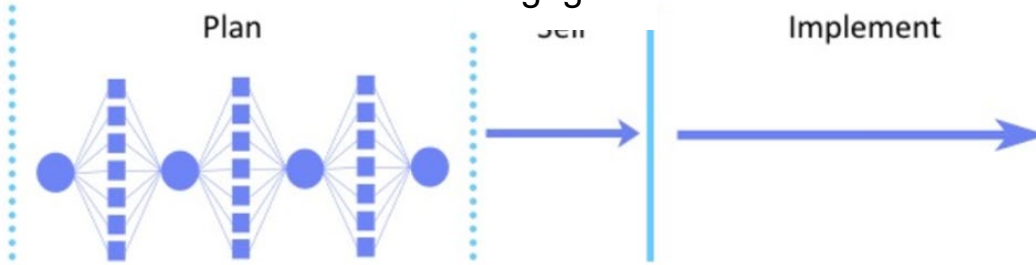


# Progress to Date & Moving Forward

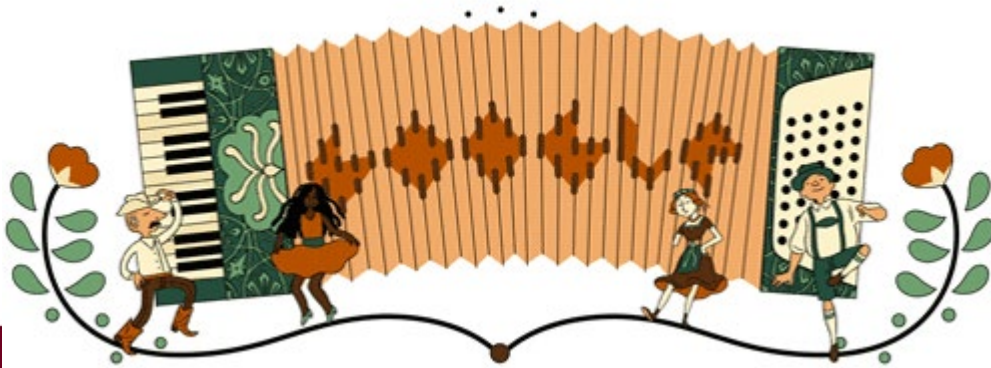


# Collaborative Planning Model

## Accordion Planning



© 2001



The **accordion- style process** of planning allows multiple points to present; discuss; and weigh in on each iteration until groups reach **consensus** on a final product.

# Consensus

<b>Consensus requires that...</b>	<b>Consensus is not...</b>
<ul style="list-style-type: none"><li>• Everyone has the opportunity to be heard</li><li>• You seek a win/win solution</li><li>• Everyone can live with the decision and everyone is willing to actively support and help implement it</li></ul>	<ul style="list-style-type: none"><li>• Majority vote</li><li>• Compromise</li><li>• Everyone getting their first choice</li><li>• A win/lose solution</li></ul>

# Backbone Support

---

As OPEN's "backbone" organization,  
CareQuest Institute:

**Guides** the shared vision & strategy

**Convenes** Network members

**Evaluates** sustainability

**Measures** impact

**Staffs** the Network Support Team





**CareQuest**

Institute for Oral Health.

On the Road to a Better  
Oral Health Care System



### 2024 Impact Report

*Itinerary*

- Giving Back to Communities
- 📍 Driving Policy Change
- 📍 Oral Health Is Health
- 📍 Transformation Through Education
- 📍 Changing the Conversation with Data

Exit

## Giving Back to Communities

Investing in organizations that are improving  
oral health care in their communities

Hop in and explore the stories, people,  
and moments that made 2024 a  
transformative year in the **CareQuest**  
**Institute Impact Report**



[impact.carequest.org](https://impact.carequest.org)

# Network Support Team



**Bianca Rogers (she/her)**

**Project Manager**

E: brogers@carequest.org

*If my hobby had a job title:  
Film & Television Critic*



**Frances Walsh (she/her)**

**Project Manager**

E: fwalsh@carequest.org

*If my hobby had a job title:  
Wilderness Adventure Guide*

## *Backbone Leader Sponsors*



**Grandy Cody (she/her)**

**Vice President, Strategy**

E: gcody@carequest.org



**Trenae Simpson (she/her)**

**Sr. Director, Grants & Programs**

E: tsimpson@carequest.org





# Committee Updates

*OPEN Formal Leaders*

# Advocacy Committee

## Election Engagement Campaign Results

**1800+**

Presidential Emails  
Sent

**11.5M**

Impressions on Social  
Media

**650+**

Poll Results One-Pager  
Downloads

### Upcoming in 2025:

- Build excitement for OPEN Hill Day on May 13-14 in DC
- Create opportunities for OPEN to keep up momentum post Hill Day
- Strategize how to protect key oral health policies and mobilize OPEN as appropriate

Advocacy  
Committee

# Dental Coverage Committee

## In 2024...

- Explored state opportunities to enhance and support oral health workforce in concert with Medicaid adult dental benefit expansions
- Explored collective opportunities to enhance and support administrative action to improve Medicare oral health coverage

## Upcoming:

- Keep each other informed on congressional and administrative actions
- Work together to protect dental coverage in Medicaid and Medicare

Dental  
Coverage  
Committee

# Regional Committee



- **State Oral Health Connections Survey:** To increase state oral health connections and initiatives working to incorporate community voices, and to support targeted outreach and alignment strategies that reflect the realities on the ground.
- **65% of State Oral Health Improvement Plans reported on did not actively involve community voices (2024)**
- **The OPEN Grassroots Playbook:** To equip advocates with the tools they need to drive meaningful change by centering community voices and fostering leadership development through key phases of the engagement process.

## Upcoming in 2025:

### Grassroots Representatives (1/state)

- Develop recommended tools and trainings defined in 'Grassroots Playbook'
- Develop key messages to reach target community-level audiences

### State Representatives (1/state)

- Develop targeted outreach plans to build connections + alignment with state-level partners
- Develop key messages to reach state-level audiences (conservative vs liberal)

# Member Engagement Committee

## 2024 Network Health Priorities:

- Define clear OPEN goals and action plans
- Streamline communication to bolster members understanding of the network
- Create collaborative learning spaces where members can contribute to network goals.

## Upcoming in 2025:

**Design and launch process for new member onboarding;**

**Refine strategies to recruit and engage members based on Network Health Assessment findings;**

### Pilot Membership Pathways:

- Quarterly OPEN-wide Meeting (orientation, updates, OPEN dialogue)
- New Member Buddy/Mentorship Program
- OPEN Map to support relationships & alignment building

Member  
Engagement  
Committee



# What's New in 2025

*Frances Walsh, MPH*

*Project Manager, CareQuest Institute for Oral Health*

# Quarterly OPEN-wide Meeting

## Bring members together to:

- Welcome new and potential members.
- Share updates from different committees and teams.
- Have small group discussions on important topics or by region.

## OPEN to Everyone!

## Regular New Member Onboarding

## Checking in to learn from you:

- What do you need to succeed in your work?
- What would you like to learn or share with others?

# We Heard You!

## Key Topics Identified at 2024 Annual Meeting

### State-based:

1. Building connections with state health agencies & initiatives
2. Promising approaches to stakeholder communication
3. Policy communication framing for bipartisan messaging

### Community-based:

1. Collaborative approaches to collect, share, and amplify community stories
2. Building data literacy capacity among community partners
3. Creating sustainable coalitions through shared goals, resource pooling, and collaborative advocacy



# State & Grassroots Representative Roles

**State & Grassroots Committee** a collaborative space to share & learn between all State Reps & Grassroots Reps, which will:

- eliminate siloed efforts while centering community driven approach
- highlight examples to replicate lessons learned across states
- build out phases of development identified in the Grassroots Playbook (below)
- inform Quarterly OPEN-wide Meeting topics (regular survey for all OPEN Reps)

1. Research +  
Partnership Building

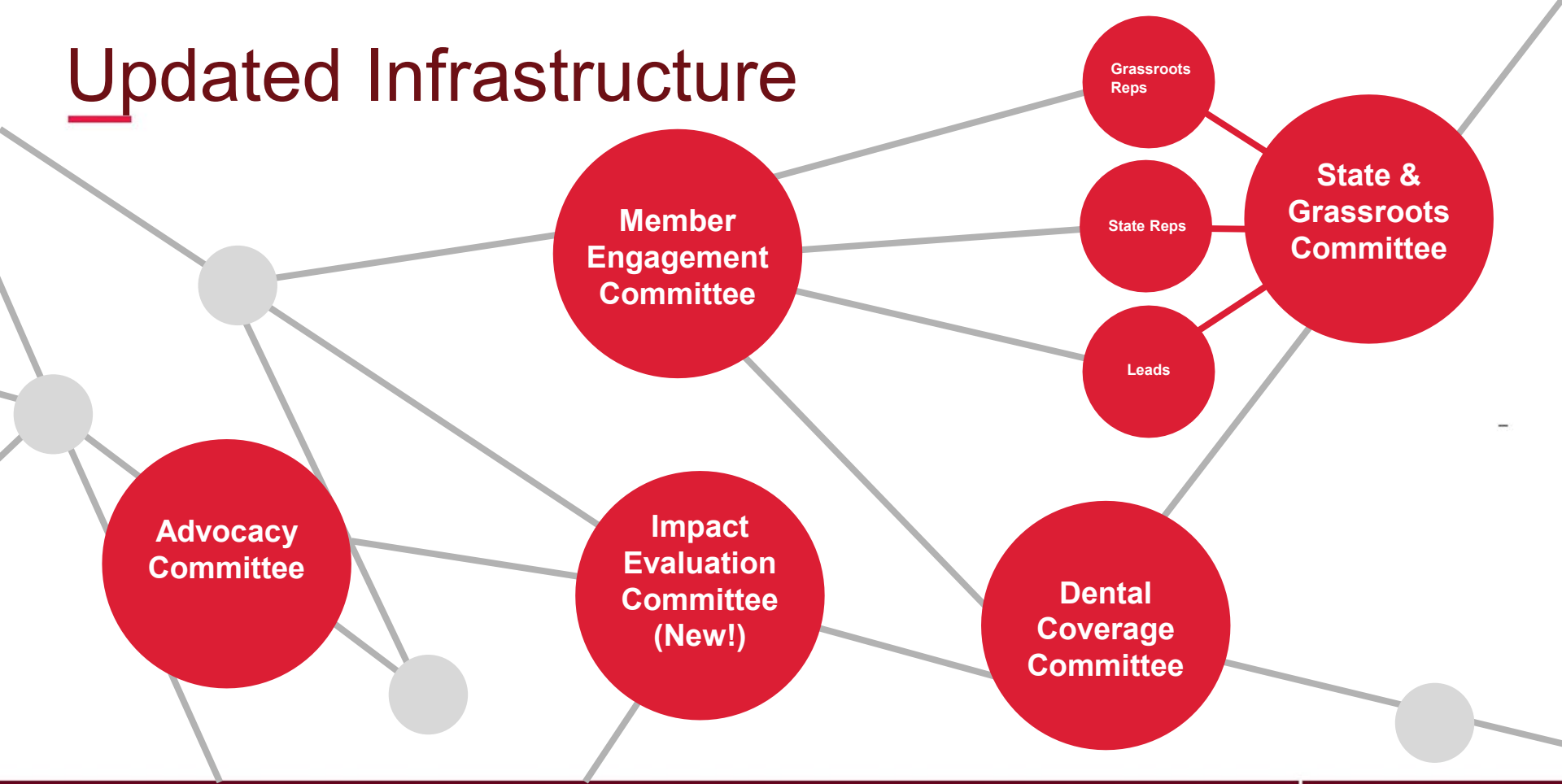
2. Planning + Goal  
Setting

3. Tailored  
Implementation +  
Outreach Events

4. Training, Education  
+ Advocacy  
Development

5. Evaluation +  
Sustainability

# Updated Infrastructure



# NEW Committee: OPEN Impact Evaluation

## Impact Evaluation Committee

Seeking 4 Committee Members who will play a critical role in:

- evaluating current measurement approaches
- aligning on shared goals
- informing OPEN implementation efforts

This Committee will be invaluable in ensuring that the framework is utilization-focused, actionable, and supports meaningful decision-making across all levels of OPEN.

Impact  
Evaluation  
Committee

## THANK YOU IMPACT WORKGROUP MEMBERS:

- Annaliese Cothron
- Christian Moller-Anderson
- Heather Waldron
- Scott Allen
- Vanessa Rastovic

**Want More Info? Office Hours:**  
Thursday [2/20 @ 3pm ET](#) &  
Friday [2/21 @ 1pm ET](#)



# How to Get Involved

*Bianca Rogers, MBA*

*Project Manager, CareQuest Institute for Oral Health*

# OPEN Formal Lead Positions Available

## Grassroots Representatives:

- Alabama
- Alaska
- Colorado
- Idaho
- Kansas
- Kentucky
- Mississippi
- New Jersey
- North Dakota
- Rhode Island
- South Dakota
- Wyoming

State &  
Grassroots  
Committee

# OPEN Formal Lead Positions Available

## State Representatives:

- Alabama
- Alaska
- Maine
- Michigan
- Nebraska
- New Jersey
- North Dakota
- Oklahoma
- Oregon
- South Dakota
- Washington

State &  
Grassroots  
Committee

# How to Apply

- Application Checklist (Renewal + New App)
- Deadline: March 14th
- Visit [carequest.org/open](https://carequest.org/open)



## 2025 OPEN Leadership Application Checklist (New Applicant)

### About OPEN Formal Leaders

The [Oral Health Progress and Equity Network](#) (OPEN) Formal Leaders support coordinated action across the [network's infrastructure](#), designed to advance systems change and create an oral health system that works for everyone. Formal Leaders engage with OPEN members and stakeholders in the field to learn, share, and weave network efforts in the [Collective Impact Strategy](#) at national, state, and community levels. OPEN Formal Leaders play a critical role in advancing progression of network connections and goals to ensure that oral health care is equitable, accessible, and affordable for all.

### OPEN Collective Impact Strategy

- **Listen & Learn:** We listen and learn from one another, and our communities, to inform our agenda and shared goals.
- **Advocate:** We advocate to advance equitable oral health care policies and legislative progress by mobilizing and engaging a diverse group of stakeholders.
- **Look to Data:** We take a data-informed approach to all that we do — collecting and sharing the latest oral health research and data-informed strategies that help drive systems change.
- **Share:** We work as a group and community to share best practices, resources, and lessons learned, because we know that as a network, we are stronger together.
- **Bring People Together:** We bring together diverse groups of community members, advocates and leaders who share a common passion for advancing health equity and solving America's oral health challenges.

### Eligibility & Requirements

Individuals and organizations who are passionate about oral health equity and rebuilding the oral health system to work for everyone are welcome to apply for an OPEN Formal Leader position. Self-employed individuals and the individuals representing an organization cannot hold more than one position. Multiple individuals representing the same organization can apply and hold separate roles, with consideration to sectors of work represented to ensure broad diversity across OPEN's Formal Leadership. Selection will be determined based on the fit of each applicant for the role. OPEN Formal Leaders are expected to carry out the responsibilities listed in this document and will be compensated for their time through a stipend.

- Prospective OPEN Formal Leaders will complete and submit their application through Fluxx by **March 14, 2025**.
- Stipend amounts will cover the following term: **April 1 - December 31, 2025**.
- OPEN Formal Leaders will be required to submit an outcomes report on how roles and responsibilities were fulfilled by **January 2026**.

# Advocacy Committee Calls

- Help shape OPEN's policy agenda & activities
- Share policy support needs
- Learn latest Federal updates

- Feb. 20 @ 2pm ET
- March 26 @ 3pm ET
- April 16 @ 3pm ET



# Dental Coverage Committee Calls

- Feb. 28 @ 1pm ET
- April 2 @ 2pm ET

- Connect with people & organizations
- Platform to share experiences & lessons learned
- Offers national perspectives and updates

# Join Us!

## Take 20

How OPEN Members can  
Champion Minimally Invasive  
Care: Aligning Advocacy to  
Transform Oral Health

Thursday, March 6, 2025  
3:00 - 3:20 p.m. ET



Steve Geiermann, DDS  
Chair, Best Practices Committee,  
Association of State and  
Territorial Dental Directors



Grace Linn, MA  
President, Creative Media  
Solutions, Inc.

**Register  
Now!**



# Upcoming Events

## May 13-14

- OPEN Hill Day | Washington, DC
- Register today!

## October 15-16

- Annual Meeting | Virtual
- Save the date!



# JOIN OPEN TODAY!

- **Connect** on oral health issues — start discussions, learn from one another, and share resources
- **Align** with change agents committed to social justice & health equity
- **Take Action** to advance equitable oral health care for everyone



*Scan to be included in the future Member Directory!*

# carequest.org/open

CareQuest  
Institute for Oral Health

Translate this page Who We Are Latest News Careers  Log In/Register

Stories of Impact How We Work Topics Resources & Tools Education & CEs

## Oral Health Progress and Equity Network

OPEN, an initiative of CareQuest Institute for Oral Health, is a diverse network of individuals and entities who are taking on America's oral health challenges so that everyone has a chance to thrive. OPEN members use their unique experiences, knowledge, and skills to lead network activities every year, creating collective energy that is driving large-scale change.

[Join OPEN](#)

**OPEN** Oral Health Progress and Equity Network

### Upcoming Events

Event	Date	Time (ET)	Location	Registration Link
Take 60: OPEN 2025 Kick-off	Feb 12	3-4 p.m.	Online	<a href="#">Register</a>
Advocacy Committee Meeting	Feb 20	2-3 p.m.	Online	<a href="#">Register</a>
Dental Coverage Committee Meeting	Feb 28	1-2 p.m.	Online	<a href="#">Register</a>
Take 20: Championing Minimally Invasive Care — Aligning Advocacy to Transform Oral Health	Mar 6	3-3:20 p.m.	Online	<a href="#">Register</a>
Advocacy Committee Meeting	Mar 26	3-4 p.m.	Online	<a href="#">Register</a>
Dental Coverage Committee Meeting	Apr 2	2-3 p.m.	Online	<a href="#">Register</a>
Advocacy Committee Meeting	Apr 16	3-4 p.m.	Online	<a href="#">Register</a>
Hill Day	May 13-14		Washington, DC	<a href="#">Register</a>

# Register for Our Upcoming February 19 Webinar

**CareQuest**  
Institute for Oral Health.

**ADA** NATIONAL  
DENTAL  
ASSOCIATION

## Webinar

### Advancing Equity:

Strategies to Overcome  
Implicit Bias in  
Dental Practices

Wednesday, February 19, 2025

7-8 p.m. ET

ADA CERP Credits: 1



Moderator &  
Presenter

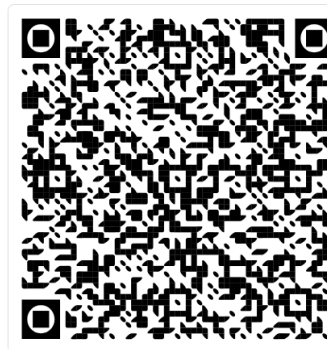
**Cheryle Baptiste Hill, DDS, FICD**  
101st President,  
National Dental Association



Presenter

**Fadie T. Coleman, PhD**  
Assistant Dean of Diversity, Equity,  
Inclusion, and Belonging (former),  
Harvard School of Dental Medicine

Register Now!





A monarch butterfly with its wings spread, showing the characteristic orange and black pattern, is perched on a green leaf stem. Below it, a monarch caterpillar with a similar pattern is also on the stem. The background is a solid, muted green color.

**OPEN Conversions**

# Discussion Topics:

- What are folks looking forward to most in your OPEN experience this year?
- What are you interested to learn more about through the network?





---

# Q&A

*Bianca Rogers*

*Project Manager, CareQuest Institute for Oral Health*



---

# Wrap Up & Close

*Frances Walsh*

*Project Manager, CareQuest Institute for Oral Health*

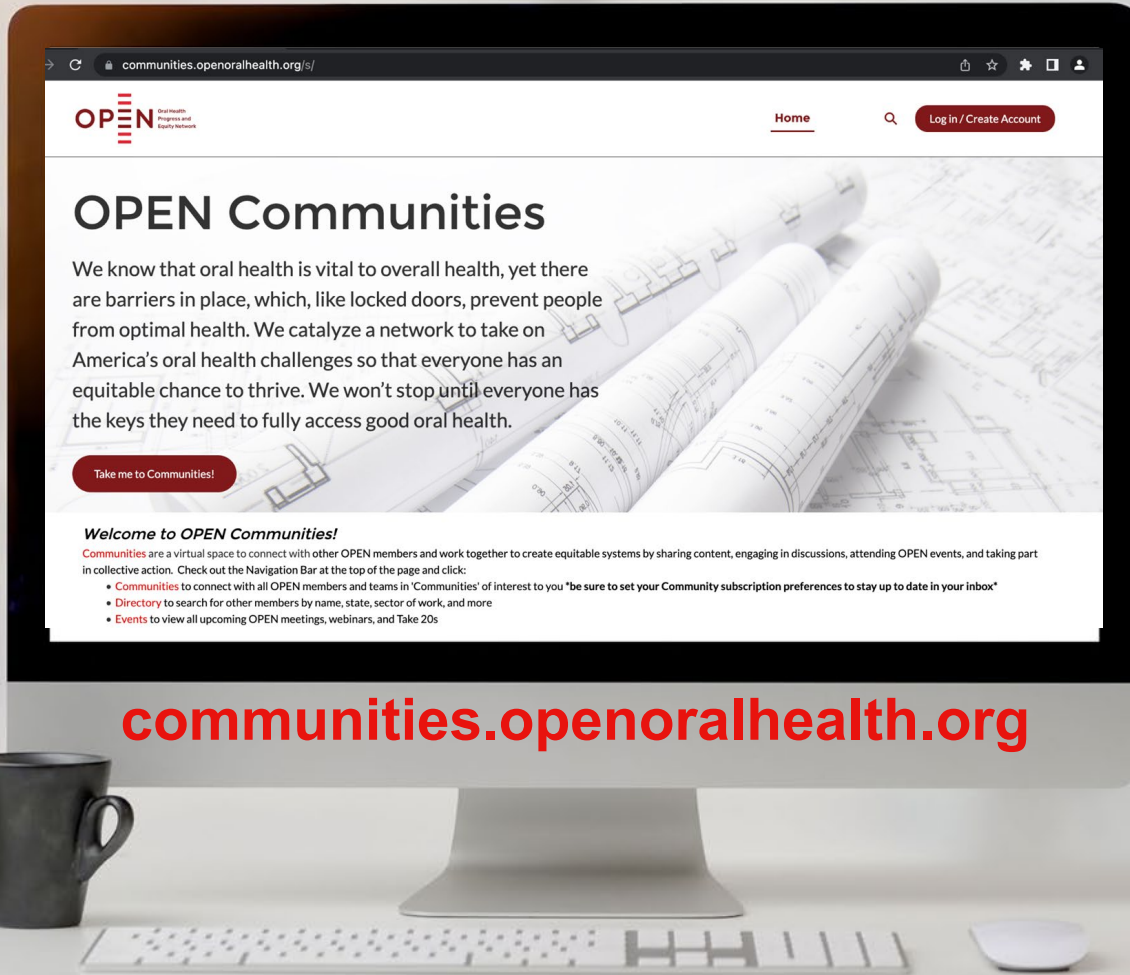
# Next Steps

- **Evaluation Form**
  - Deadline: February 21
- **Resources post meeting**
  - Webinar recording + slides
- **Formal Leader Applications**
  - Application Checklist available on [carequest.org/open](http://carequest.org/open)
  - Deadline: March 14
- **Register for Hill Day in DC!**

## Impact Eval Committee Office Hours:

- Thursday 2/20 @ 3pm ET &
- Friday 2/21 @ 1pm ET

# Platform Guide



[communities.openoralhealth.org](https://communities.openoralhealth.org/)